

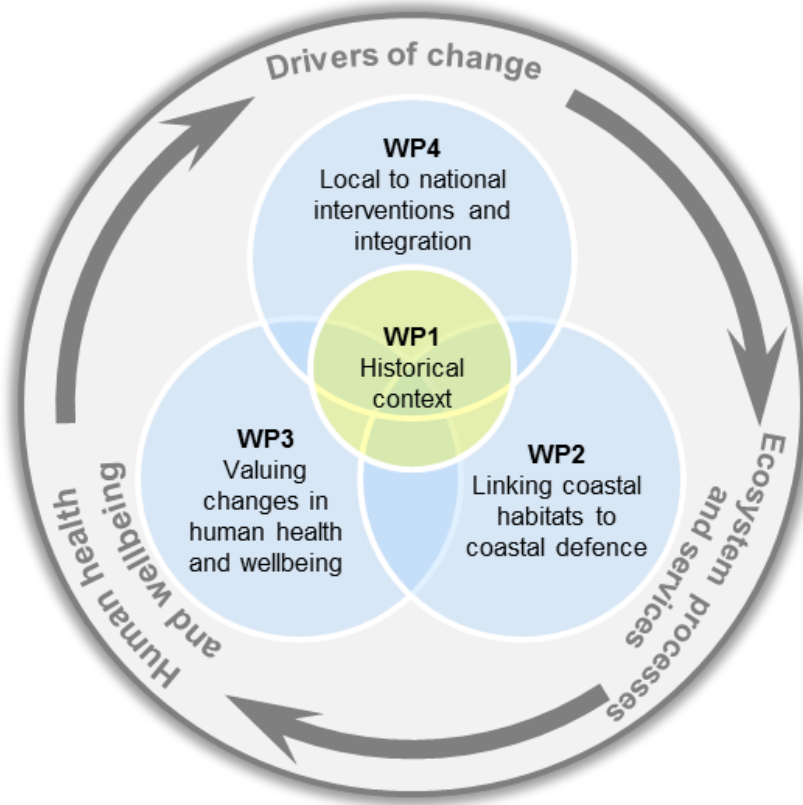
The place that saltmarsh occupies in the popular psyche

Angus Garbutt and Simon Read

NERC Centre for Ecology & Hydrology and Middlesex University London

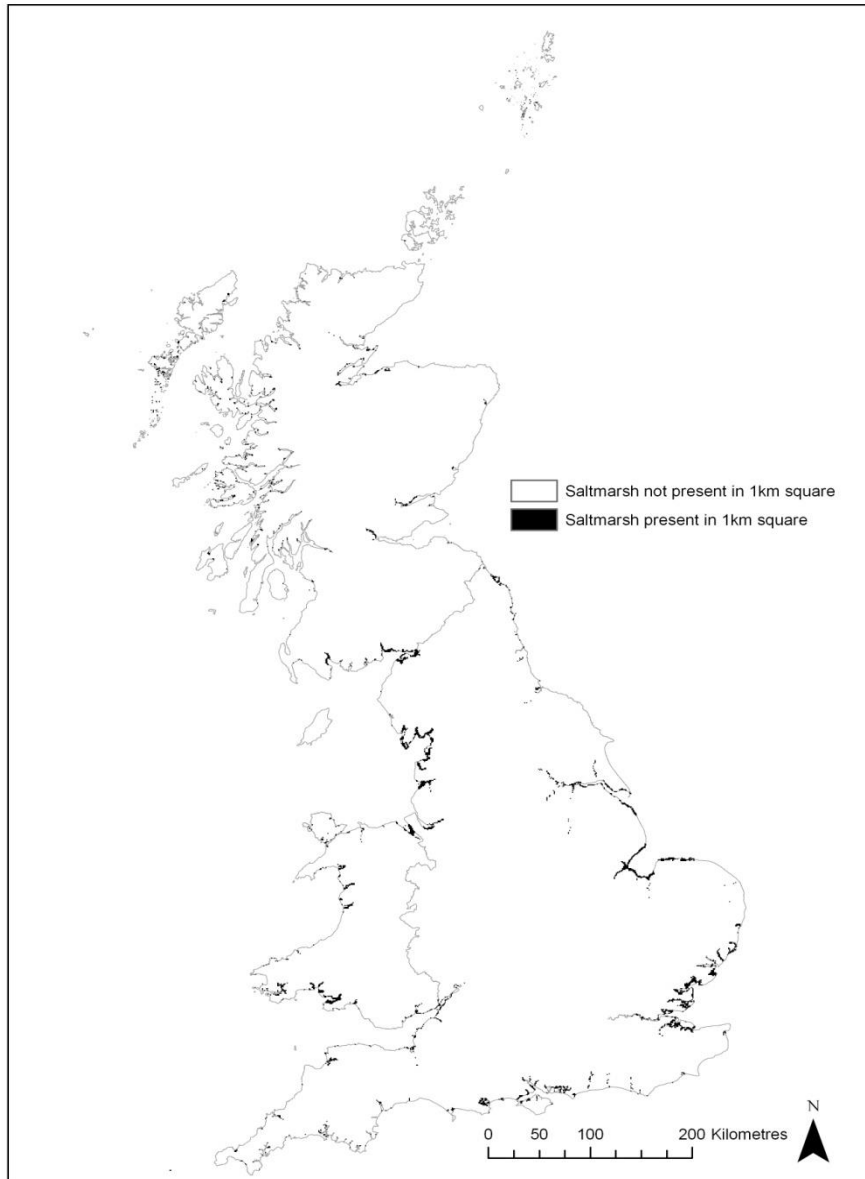
Valuing Nature Conference, 18th/19th October 2017, Edinburgh

CoastWEB: valuing the contribution saltmarshes make to human health and wellbeing, focusing on the alleviation of coastal



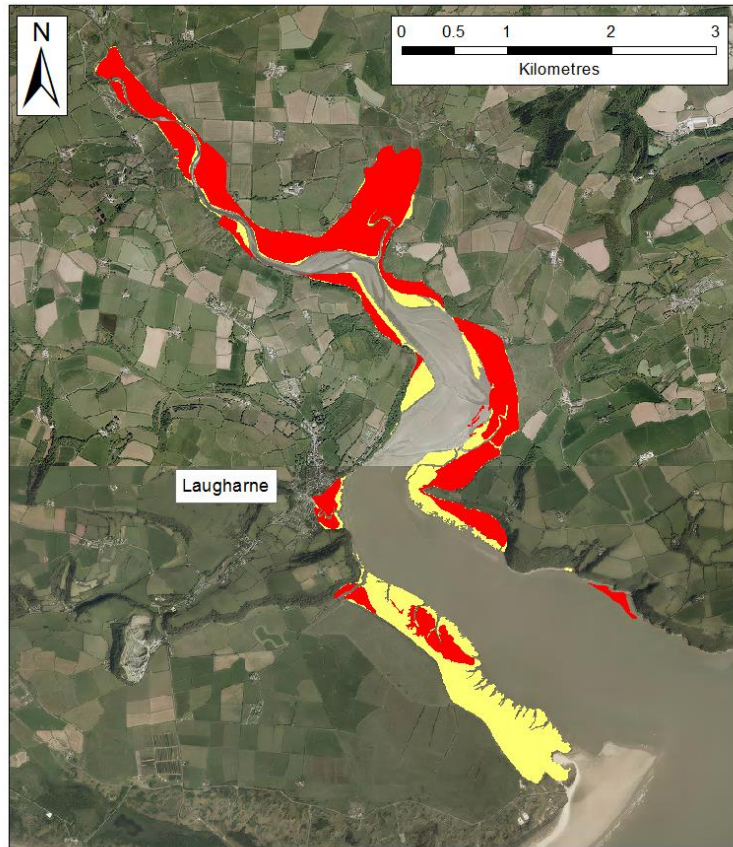
Environmental science, economics and social psychology, the arts, policy and governance.

Saltmarsh distribution

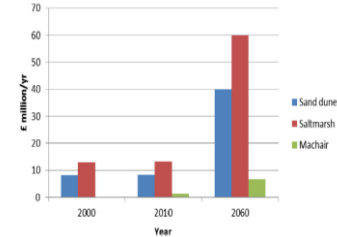


-
- This detailed land cover map of the British Isles uses a color-coded system to represent various land types. The map shows a high density of different land cover types, particularly in the lowlands of Great Britain. The colors correspond to the legend on the left.
- Broadleaved / mixed woodland
 - Coniferous woodland
 - Arable & horticulture
 - Improved grassland
 - Rough grassland
 - Neutral grassland
 - Calcareous grassland
 - Acid grassland
 - Heather
 - Heather grassland
 - Fen, marsh & swamp
 - Bogs
 - Freshwater
 - Montane
 - Inland rock
 - Suburban
 - Urban
 - Supra-littoral rock & sediment
 - Littoral rock & sediment
 - Saltmarsh
 - Saltwater

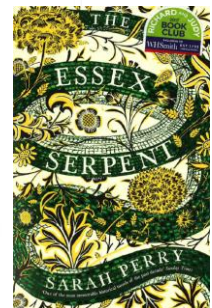
Saltmarsh value and change



■ Saltmarsh extent 1947
■ Saltmarsh extent 2014



Sequestration capacity to 2060 valued at ~ £1 billion



Saltmarshes and the arts

Documenting changes in cultural trends over time in order to assess the relative importance that salt marshes play in the public psyche



Saltmarsh as a stage set for human drama

Liminal territories, including saltmarsh, are cast in the cultural subconscious as neutral, contested and uncertain territory



Byrhtnoth died in 991 in the battle of Maldon.



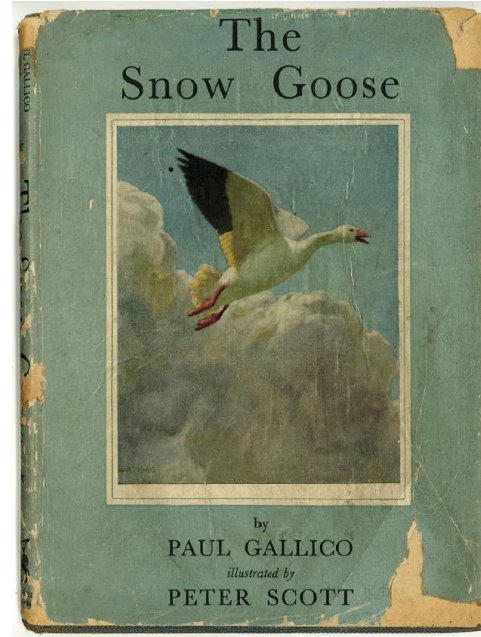
Marsh landscape is both final fastness and refuge



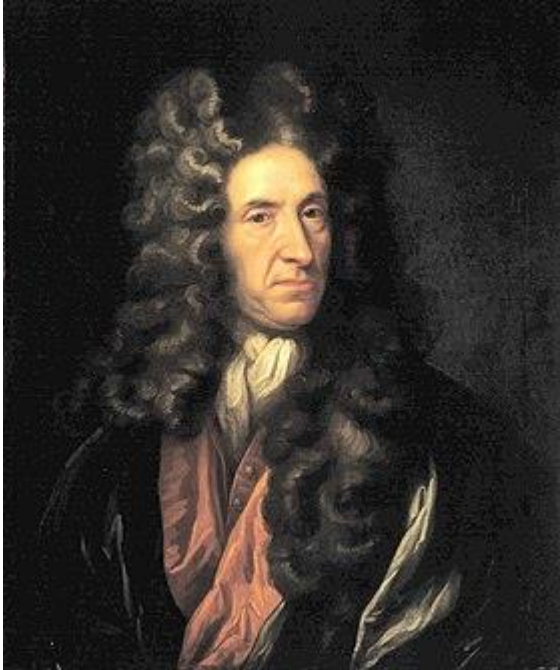
A nation overrun and on the brink

Literature and popular wastelands....

..... where the extraordinary can take place.



Landscape chroniclers



Daniel Defoe

“This side of the county is rather rich in land, than in inhabitants, occasioned chiefly by the unhealthiness of the air.....”

“The reason, as a merry fellow told me, who said he had had about a dozen and half of wives, (tho' I found afterwards he fibb'd a little) was this;.....”

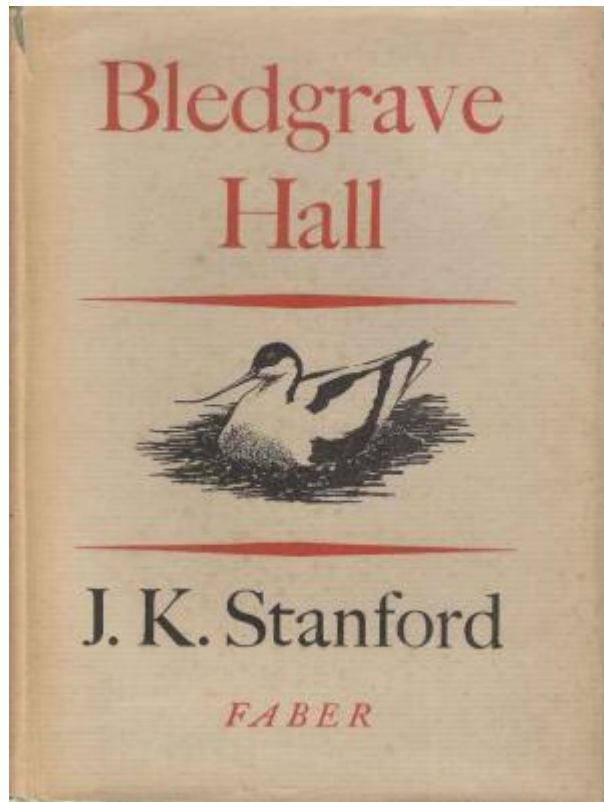
That when they took the young lasses out of the wholesome and fresh air, they were healthy, fresh and clear, and well; but when they came out of their native air into the marshes among the fogs and damps, there they presently chang'd their complexion, got an ague or two, and seldom held it above half a year, or a year at most; and then, said he, we go to the uplands again, and fetch another

.....

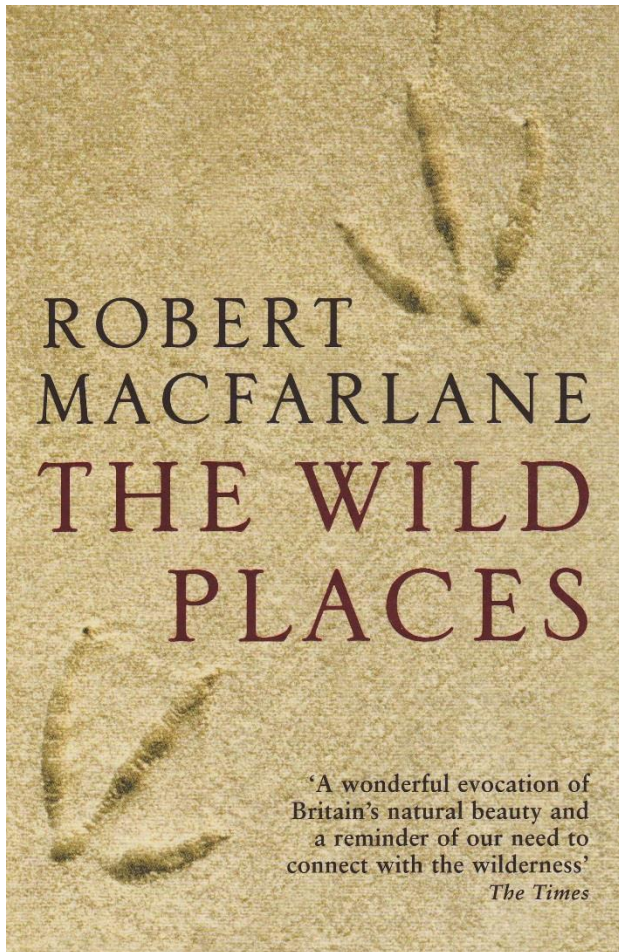
Wartime, patriotism and celebration of nature

The therapeutic effect of an isolated coastal environment upon combat stressed soldiery is appropriate to this study and remains pertinent today:

Osea Island. A military rehabilitation and recuperation facility after the Iraq war.



Post-war writing and lyrical ecology



"I walked south along the seawall for five miles and in all that time I met no-one, and only saw a farmer, turning distantly in his tractor. I stopped to pull fruit from a wild apple tree..... I ate salty leaves of sea-kale and sea-beet, and chewed upon the liquoricey feathery fronds of the abundant fennel. Once, a weasel emerged from the long grass at the foot of the sea wall, looked warily around and made off in its hooping run for cover in the long grass."

The good, the bad and redemption

The 'good': freedom and meaningfulness



The 'bad': fear and isolation



'Redemption':
restoration and engagement



Thank you

Angus Garbutt

ag@ceh.ac.uk